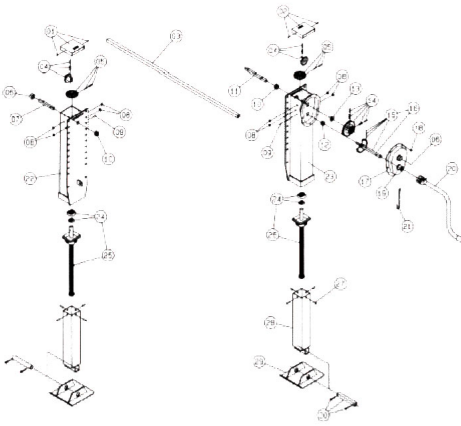


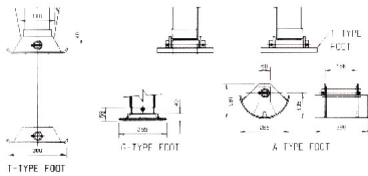
D200G / T LANDING LEG



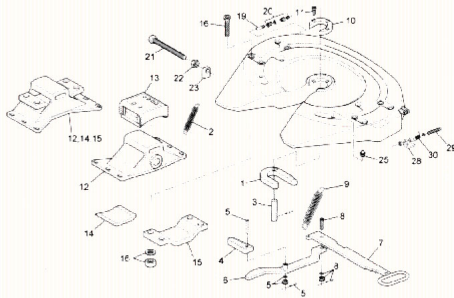
Static load	Lifting capacity	Weight
50 000 kg	24 000 kg	115 kg

D200G / T LANDING LEG

- | | |
|--|---|
| 1 Left Cover (with Screws) | 16 Crank drive pinion with Pressure Spring with Balls |
| 2 Right Cover (with Screws) | 17 Gearbox Cover |
| 3 Connecting Shaft | 18 Self Tapping Screw |
| 4 Small Bevel Gear with Clamping Sleeves | 19 Bush |
| 5 Large Bevel Gear with Clamping Sleeves | 20 Crank Handle with Crank Handle Grip |
| 6 Bearing | 21 Crank Parking Hook |
| 7 Drive Shaft | 22 Outer Tube - Left |
| 8 Plug | 23 Outer Tube - Right |
| 9 Grease Nipple | 24 Thrust Bearing |
| 10 Collar | 25 Spindle - Left Complete |
| 11 Drive Shaft | 26 Spindle - Right Complete |
| 12 Bearing | 27 Pin |
| 13 Bearing | 28 Inner Tube |
| 14 Large Gear Set with Clamping Sleeves | 29 Sand Shoe |
| 15 Pressure Spring with Balls | 30 Shaft for Sand Shoe - complete |

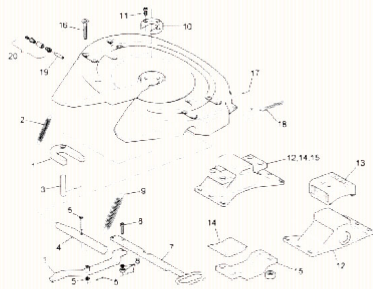


JSK 37C FIFTH WHEEL



- | | |
|----------------------------------|----------------------------------|
| 1. Lock Jaw | 13. Upper Rubber Cushion |
| 2. Spring for Lock Jaw | 14. Lower Rubber Cushion |
| 3. Pivot Pin for Lock Jaw | 15. Mounting Bracket |
| 4. Locking Bar | 16. Hex Bolt |
| 5. Bolt for Locking Bar | 19. Lubrication Fitting Complete |
| 6. Lever | 20. Grease Nipple Complete |
| 7. Operating Handle | 21. Adjusting Screw |
| 8. Socket Head Bolt | 22. Hexagon Nut |
| 9. Double Tension Spring | 23. Guide Piece |
| 10. Wearing Ring | 25. Grease Nipple |
| 11. Socket Head Bolt | 28. Latch Complete |
| 12. Pedestal -
185mm
150mm | 29. Hex Bolt c/w Washer & Nut |
| | 30. Spring Noose c/w Spacer |

JSK 36C FIFTH WHEEL



- | | |
|---------------------------|----------------------------------|
| 1. Lock Jaw | 12. Pedestal -
185mm
150mm |
| 2. Spring for Lock Jaw | 13. Upper Rubber Cushion |
| 3. Pivot Pin for Lock Jaw | 14. Lower Rubber Cushion |
| 4. Locking Bar | 15. Mounting Bracket |
| 5. Bolt for Locking Bar | 17. Split Pin |
| 6. Lever | 18. Spring Hook |
| 7. Operating Handle | 19. Lubrication Fitting Complete |
| 8. Socket Head Bolt | 20. Grease Nipple Complete |
| 9. Double Tension Spring | 21. Lever Bush |
| 10. Wearing Ring | |
| 11. Socket Head Bolt | |

FIFTH WHEEL COMPONENTS



TRAILER EQUIPMENT

